

Technical specification

Submersible pump P 7055, 50 Hz





P 7055

Product

Axial-flow pump for transportation of large volumes of water, containing minimum debris and fibres, at low heads.

Denomination

Product code 7055/600
 Product code 7055/680
 Installation L

Process data

Liquid temperature max +40 °C
 Depth of immersion max 20 m
 The pH of the pumped liquid pH 6 - 11
 Liquid density max. 1100 kg/m³
 Pump (ball-) throughlet max. 110 mm

Motor data

Frequency 50 Hz
 Insulation class H (+180 °C)
 Voltage variation
 - continuously running max ± 5%
 - intermittent running max ± 10%
 Voltage imbalance between phases max 2%
 No. of starts/hour max 15

Cable

SUBCAB® To be dimensioned by ITT Flygt

Monitoring equipment

Thermal contacts opening temperature 140 °C

Material

Pump housing Cast iron
 Stator housing Cast iron
 O-rings Nitrile rubber
 Propeller Cast iron

Mechanical face seals

Alternative	Inner seal	Outer seal
1	Corrosion resistant cemented carbide/ Corrosion resistant cemented carbide	Corrosion resistant cemented carbide/ Corrosion resistant cemented carbide

Shaft

Alternative	Material
1	Steel
2	Stainless steel

Surface Treatment

All cast parts are primed with a water-borne primer. The finishing coat is a high-solid two pack paint.

Weight

Exclusive power cable, inclusive drive unit.

Drive unit	Installation			
	L			
600	510 kg			
680 ¹⁾	660 kg			
680 ²⁾	690 kg			

¹⁾ stator 35-24-XX

²⁾ stator 35-28-XX

Option

Analogue temperature sensor in main bearing (7055/680) Pt100
 Leakage sensor in stator housing FLS
 Leakage sensor in oil housing CLS
 Other cables
 Surface treatment Epoxy treatment
 Zinc anodes
 Leakage sensor in junction box

Accessories

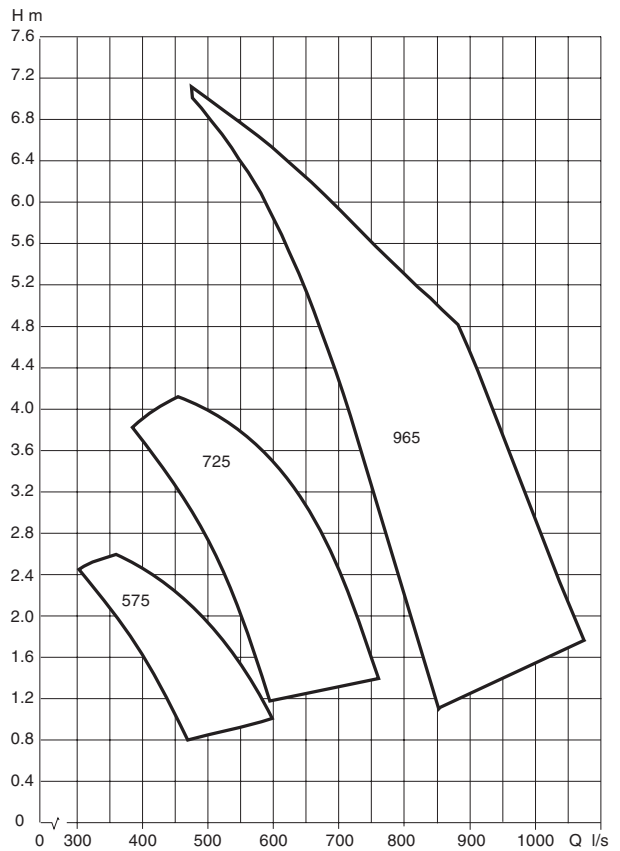
Discharge connections, adapters, hose connections and other mechanical accessories.

Electrical accessories such as pump controller, control panels, starters, monitoring relays.

See separate booklet or www.flygt.com, for further information.

Motor rating and performance curve

Curve/Impeller No	Drive unit	Rated power, kW	Rated current, A	Starting current, A	Power factor cos φ	Ex proof version available
400 V, 50 Hz, 3 ~, 575 r/min						
575	600	13	34	136	0,68	
575	680	17	38	174	0,75	
400 V, 50 Hz, 3 ~, 715 r/min						
725	600	17	38	180	0,76	
725	680	27	56	281	0,81	
725	680	37	77	390	0,80	
400 V, 50 Hz, 3 ~, 970 r/min						
965	680	45	85	485	0,88	
965	680	55	104	550	0,88	

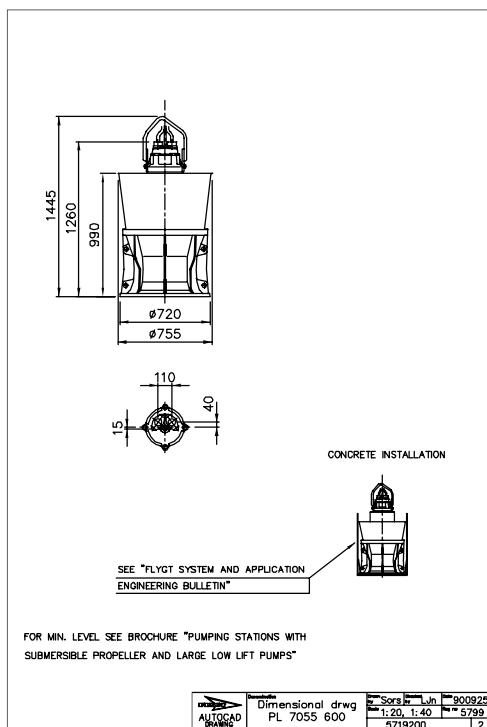


Dimensional drawing

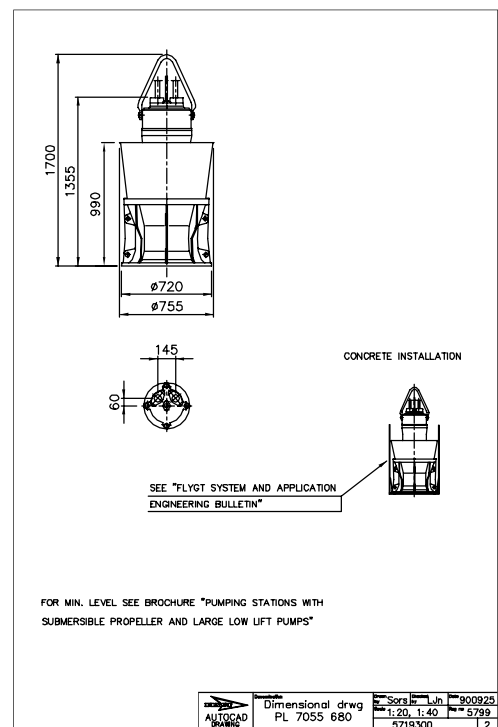
All drawings are available as Acrobat documents (.pdf) and AutoCad drawings (.dwg). Download the drawings from www.flygt.com or contact your ITT Flygt representative for more information.

All dimensions are in mm.

Drive unit 600, L-installation



Drive unit 680, L-installation





www.flygt.com